

# THE BIOLOGY OF *PHYTOPHTHORA INFESTANS* AT ITS CENTER OF ORIGIN\*

---

Niklaus J. Grünwald<sup>1</sup> and Wilbert G. Flier<sup>2</sup>

<sup>1</sup>Horticultural Crops Research Laboratory, USDA Agricultural Research Service, Corvallis, Oregon 97330; email: grunwaln@onid.orst.edu

<sup>2</sup>Plant Research International, 6700 AA Wageningen, The Netherlands; email: wilbert.flier@wur.nl

**Key Words** coevolution, epidemiology, potato late blight, resistance, speciation

■ **Abstract** The central highlands of Mexico are considered to be a center of genetic diversity for both the potato late blight pathogen and for tuber-bearing *Solanum* spp. Recent work conducted in Mexico and South America sheds new light on the biology and evolution of *Phytophthora infestans* and other related *Phytophthora* pathogens. It now appears that Mexican *Solanum* species, which coevolved with *P. infestans* and were previously known for providing a source of R-genes, also provide a source of quantitative, rate-reducing resistance that is highly effective, stable, and durable. It is now apparent that Mexico is the center of origin not only of the potato late blight pathogen *P. infestans*, but also of several related *Phytophthora* species including *P. mirabilis*, *P. ipomoeae*, and possibly *P. phaseoli*. We close with the hypothesis that these *Phytophthora* species evolved sympatrically from one ancestral host through adaptive radiation onto their respective four host families.

## INTRODUCTION

Potato late blight continues to be one of the most important crop diseases of all time. Best known for its role in causing the Irish potato famine in the 1840s, it is still responsible for significant losses and increases production costs through the need for recurrent fungicide usage, annual reductions in marketable yields, and postharvest losses. Potato late blight is caused by the oomycete plant pathogen *Phytophthora infestans* (Mont.) de Bary. The central highlands of Mexico are considered to be a center of genetic diversity for both the potato late blight pathogen (21, 26, 36, 40) and for germplasm of tuber-bearing *Solanum* spp. (46, 48, 79–81). R-genes for resistance to potato late blight were first discovered in two endemic *Solanum* species, namely *S. demissum* and *S. stoloniferum* (56, 60, 61). The presence of

---

\*The U.S. Government has the right to retain a nonexclusive, royalty-free license in and to any copyright covering this paper.

R-genes is the result of coevolution between *P. infestans* and native *Solanum* spp. (82). As the discovery of R-gene diversity in native *Solanum* spp. and genotypic diversity in the *P. infestans* population coincided, the hypothesis was advanced that Mexico might be the center of origin of *P. infestans* (27). Recent work conducted in Mexico and South America sheds new light on the biology and evolution of *P. infestans* and related, endemic sister species. In this review we focus on the natural history, ecology, host resistance as well as evolution of *P. infestans* and closely related *Phytophthora* species in central Mexico. We end by advancing the hypothesis that a specific group of Mexican *Phytophthora* species, to date including *P. mirabilis*, *P. ipomoeae*, *P. phaseoli*, and *P. infestans*, share one common ancestor and are the result of evolution through sympatric speciation.

## NATURAL HISTORY AND EPIDEMIOLOGY

### Foliar Epidemics

Epidemic development of potato late blight critically depends on the local climate. Our current understanding of the epidemiology of potato late blight is strongly biased by studies conducted in regions with temperate climates. Areas of the highland tropics, including the central highlands of Mexico, have a very different climate. Most potato late blight research conducted in Mexico took place in the Toluca valley because the Mexican national potato program is located there. This valley offers a typical tropical highland climate given the elevation (>2600 m above sea level), latitude (19°N), and longitude (99°E). In contrast to a typical temperate climate, Toluca summers are characterized by almost constant cool temperatures and almost daily precipitation (41, 42). Typically, between 800 to 900 mm of rainfall are recorded yearly, most of which occurs during July to September, and daily mean temperatures remain between 5° to 10°C with daily maxima around 20° to 25°C, providing cool night and day temperatures (41, 42). The number of hours with relative humidity above 90%, a surrogate measure for hours of leaf wetness, generally ranges between 12 to 16 h on 75 to 90% of days. Given the daily precipitation and cool temperatures, this climate is favorable to late blight development on almost every day of the growing season.

Late blight epidemics on commercial potatoes in the Toluca valley are driven by the onset of the rainy season. Potatoes are usually planted in early to mid June, just 2 to 4 weeks before the daily rains begin. Once the rainy season starts, epidemics are initiated on emerging plants, and disease on a susceptible cultivar such as Alpha progresses steadily, typically resulting in a logistic disease progress curve (41, 42, 66). In contrast, epidemics on native *Solanum* species follow a different dynamic.

Epidemics on wild *Solanum* spp. rarely occur before the end of August or beginning of September (40). As discussed below, several factors might contribute to this observation including the small size and patchy distribution of *Solanum* populations as well as the R-gene structure and distribution. Rivera-Peña (66) describes development of epidemics on *S. demissum* and *S. verrucosum* as early as late June to early July, generally 3 weeks after symptoms are observed on

cultivated potato in the vicinity. Thus, epidemics on native *Solanum* spp. might well derive initial inoculum from nearby epidemics on cultivated potato.

Forecasting systems for control of potato late blight were developed for the temperate climates of Europe and the United States, and it is not clear how portable they are to the highland tropics. While evaluating several forecasting systems (6, 10, 74) for management of fungicides to control late blight under Toluca valley conditions, we noticed that initial spray advisories usually occurred 8 to 15 days too late (42) and that precipitation was the main environmental variable responsible for making spray advisories (41). A series of simulations based on historical weather data showed that the assumptions for low-temperature thresholds in these models were not valid in Toluca. Whereas the forecasting algorithms developed for temperate climates assume no pathogen development at temperatures below 7°C (50), 8°C (16), or 10°C (6, 10, 25, 74), it is clear that *P. infestans* develops at these temperatures (4, 41, 42). Such low temperatures are regularly achieved; for example, 58% of days had hourly temperatures  $\leq 10^\circ\text{C}$  and 10% of days had hourly temperatures  $\leq 7.2^\circ\text{C}$  in 1998. The temperature response of *P. infestans*, as implemented in commonly used disease forecasting systems, thus needed to be reassessed for the Toluca valley. This work demonstrated that a predictive system developed for temperate climates can be portable to a tropical highland climate based on just a few minor modifications (41).

## Tuber Blight

Tuber blight is a critical stage in the late blight disease cycle, resulting in postharvest yield loss and serving as a source of inoculum. Tuber blight is common in the Toluca valley and occurs when severe late blight epidemics coincide with heavy rainfall and waterlogging. Lapwood (52) first reported on the incidence of tuber blight in fungicide-protected crops in the Toluca valley and observed 1 to 13% blighted tubers in cultivars Majestic and Elenita. Fernández-Pavía (19) reported 4% blighted tubers in cv. Alpha grown at Calimaya, Mexico. At an experimental field in Metepec, Mexico tuber blight incidence in 1999 ranged from 0 to 15%, confirming previous observations (N.J. Grünwald & W.G. Flier, unpublished data). Not much is known about the extent to which *P. infestans* survives the crop-free period in terms of hibernation in seed or volunteer tubers. From our experience, it seems unlikely that *P. infestans* is able to survive in seed tubers, given current seed-storage conditions. Most storage facilities use ambient temperatures to store tubers, and blighted tubers generally rot completely during storage. Thus, tubers going to the field in the next growing season are usually free of late blight. Infected tubers and stolons do not appear to play a role in the life cycle of *P. infestans* on wild solanaceous hosts in the Toluca valley as no blighted stolons or tubers were detected in our own observations and those of Lapwood (52) and Rivera-Peña (65).

## Fungicide Resistance

Potato production in Mexico relies heavily on fungicides given the annual severe late blight pressure (41, 42). Mancozeb is the most commonly used fungicide.

However, metalaxyl has been used in the past and continues to be used sporadically. There are two interesting observations regarding metalaxyl resistance in the Mexican population. First, there exists a baseline level of resistance even when the pathogen population has not been exposed to metalaxyl; second, once exposed, the population undergoes selection, but also fairly rapidly reverts to pre-exposure threshold levels. Resistance to metalaxyl evolved rapidly in the Mexican population of *P. infestans* after introduction of metalaxyl (55) but then reverted to resistance levels found previous to the introduction (40). For example, metalaxyl resistance was much less frequent in a 1997–1998 than in a 1988–1989 collection (reported in 55). The proportion of isolates that grew more than 40% of the control on 5 and 100  $\mu\text{g ml}^{-1}$  metalaxyl-amended medium was much lower for isolates collected in 1997–1998 (13%) than for isolates collected in 1988–1989 (60%). By 1997–1998, the frequency distribution is again similar to frequencies of metalaxyl resistance observed in central Mexico in the early 1980s before metalaxyl use (55).

We also evaluated whether selection for resistance to metalaxyl and cymoxanil could evolve under experimental conditions within a single field season. We contrasted populations before and after fungicide exposure following seven fungicide applications during the field season in 2000. Significance of shifts in sensitivity profiles to each of the fungicides was determined using Fisher's exact test ( $n = 50$  isolates). The frequency distributions for metalaxyl and cymoxanil resistance significantly ( $P < 0.0011$  and  $0.0001$ , respectively) shifted to the right as reflected by the median for each population (Figure 1), indicating directional selection toward resistance. However, selection toward resistance combined with a significant reduction in genetic diversity ( $P < 0.01$ ) based on multilocus genotypes (mating type, *Pep*, and *Gpi*) using Shannon-Wiener's diversity index of the population of *P. infestans* after exposure ( $H' = 1.8$ ) relative to the unexposed population ( $H' = 2.6$ ) was observed only for metalaxyl. It thus appears that at least for the case of metalaxyl, exposure to multiple applications of metalaxyl resulted in purifying selection and a concomitant reduction in genotypic diversity.

## Oospores

Oospores are the sexual reproductive spores formed by *P. infestans*. In the Toluca valley, oospores are ubiquitous and are formed in all tissues examined to date. Oospore formation has been detected in potato leaflets of commercially grown field crops (30, 75), in infected leaflets of the native species *S. demissum* (20), and in potato tubers (19). The densities of oospores produced range from a few to over 5000 per  $\text{cm}^2$  for infected potato tubers and leaflets of *S. demissum*, respectively. The distribution of oospores in infected leaflets appears to be confined to one or a few clusters per leaflet (20).

Many factors affect oospore formation. The ability of compatible isolates to form oospores in both artificial media (2, 20, 28, 30, 49, 72, 73, 75, 77, 78) and host tissues (20, 57) seems to vary among combinations of parental strains. There also is a range of preference to serve as the male or female parent depending on the

parental isolates (28, 49). Formation of oospores may also be influenced by host resistance. Under field conditions in central Mexico, it appears that the greatest numbers of oospores are produced in potato cultivars with intermediate levels of late blight resistance (17; W.G. Flier, unpublished data), although other modulating factors may be involved (45, 87).

Oospores are thought to have two main functions in the life cycle of *P. infestans*: First, they provide a means of survival and thus could serve as primary inoculum for epidemic development; second, they provide a means of sexual recombination (discussed further in the section on population biology). Lapwood (52) suggested that oospores were the most plausible source of primary inoculum in the Toluca valley. Primary infections appeared either as stem lesions that extended only a few centimeters below the soil surface or as multiple lesions on lower leaves. These lesions were randomly distributed in a field and were first observed after heavy rains. No other potential sources of initial inoculum such as infected seed, cull piles, or nearby infected wild *Solanum* species were observed (52). These early observations accurately describe the current situation. During a three-year survey (1997–1999) in the Toluca valley and the slopes of the volcano Nevado de Toluca, we found the same type of stem and foliar lesions (20). Experimental work demonstrated that soil infested with oospores resulted in a significantly higher number of primary stem lesions compared with noninfested soil (18). This work also confirmed that oospores of *P. infestans* can survive winter fallow and subsequently infect field crops under natural conditions (18, 19).

Oospores of *P. infestans* seem very well adapted to the local conditions. They are produced in large numbers in all tissues of infected potato crops and wild solanaceous hosts and are eventually incorporated into the soil with the crop debris. In the Toluca valley, winters are marked by a cool and dry climate favorable to the survival of dormant oospores. Presumably, oospores incorporated into soil are not subject to microbial degradation and premature germination during the winter while soils remain dry. A subsequent potato crop planted at the end of the dry season coincides with germination of oospores once soils become moist (3, 15, 87). It appears that the life cycle of both host and pathogen are synchronized to the local climatic conditions.

## INDIGENOUS SOLANUM SPECIES

Central Mexico is considered to be a secondary center of diversity for the genus *Solanum* (46, 48). Several tuber-bearing *Solanum* species are endemic to the Toluca valley: *S. demissum* Lindt., *S. verrucosum* Schlecht., *S. iopetalum* (Bitt.) Hawkes, *S. brachycarpum* Correll, *S. × edinense* Berth., and *S. stoloniferum* Schlecht. et Bché. (64, 68). Rivera Peña (68), surveying an area of approximately 15,000 ha, estimated that *S. demissum* was most frequent (69%), followed by *S. verrucosum* (11%) and the other five species. From previous studies and our own observations (Table 1), it is clear that all of these native species can be infected by *P. infestans*

**TABLE 1** Final disease severity of different *Solanum* accessions and nightshade species in experimental plots planted in Toluca, Mexico

Accession	Species	Origin	Source of data	Final disease severity (%)	Isolates obtained
CGN-18,162	<i>Solanum acaule</i>	South America	Grünward & Flier, unpublished data	95	Yes
CGN-20,675	<i>Solanum acaule</i>	South America	Grünward & Flier, unpublished data	100	Yes
CGN-17,845	<i>Solanum acaule</i>	South America	Grünward & Flier, unpublished data	40	Yes
CGN-18,344	<i>Solanum andreamum</i>	South America	Grünward & Flier, unpublished data	8	Yes
CGN-18,311	<i>Solanum bulbocastanum</i>	Central America	Grünward & Flier, unpublished data	1	Yes
CGN-17,688	<i>Solanum bulbocastanum</i>	Central America	Grünward & Flier, unpublished data	8	No
—	<i>Solanum bulbocastanum</i>	Central America	(53)	12–15	No
93,046	<i>Solanum caripense</i>	South America	Grünward & Flier, unpublished data	25	Yes

—	<i>Solanum demissum</i>	Central America	(53)	7–34	No
—	<i>Solanum iopetalum</i>	Central America	(53)	0–8	No
CGN-18,303	<i>Solanum phureja</i>	South America	Grünwald & Flier, unpublished data	100	Yes
CGN-18,340	<i>Solanum phureja</i>	South America	Grünwald & Flier, unpublished data	100	Yes
CGN-18,281	<i>Solanum phureja</i>	South America	Grünwald & Flier, unpublished data	90	Yes
CGN-17,670	<i>Solanum phureja</i>	South America	Grünwald & Flier, unpublished data	40	Yes
CGN-18,315	<i>Solanum phureja</i>	South America	Grünwald & Flier, unpublished data	40	Yes
CGN-19,135	<i>Lycopersicon esculentum</i> var. Bonny Best	—	Grünwald & Flier, unpublished data	78	Yes
—	<i>Nicotiana glauca</i>	—	Grünwald, unpublished data	0	No
—	<i>Nicotiana benthamiana</i>	—	Grünwald, unpublished data	0	No

(53, 65). Approximately 10% of these native plants became infected in a given year (65). Many of these *Solanum* spp. occur in small populations in a range from fewer than a dozen individuals up to a few hundred plants. This patchiness and spatial isolation from potato-growing areas allows them to avoid infection by *P. infestans*. Patches can be assumed to consist of predominantly one or a few host clones harboring limited combinations of R-genes, since all plants of native *Solanum* spp. uprooted by us or in a previous study (66) were found to originate from tubers. One exception is the hybrid *S. × edinense* that is predominantly associated with low-input potato fields where growers keep seed tubers for the next potato crop.

All tuber-bearing *Solanum* spp. of South or Central American origin are susceptible to *P. infestans* to some degree. When grown in experimental plots, disease incidence is 100% and disease severity can range anywhere from 1 to 100% depending on the species and R-gene makeup of the individual genotype (Table 1) (53). This may be a result of the fact that levels of rate-reducing resistance and composition of R-genes vary among specific genotypes within a *Solanum* spp. and among *Solanum* spp. (9, 53, 54, 67). Epidemics on wild *Solanum* species under controlled experimental conditions progress in the same fashion as those on cultivated potato once initiated.

## CAN HOST RESISTANCE BE STABLE AND DURABLE?

The search for host resistance genes that provide immunity against potato late blight has centered on Mexico for some time. It was here that the first 11 R-genes for resistance to late blight were discovered in two native species, namely *S. demissum* and *S. stoloniferum* (56, 60, 61). It soon became clear that gene-for-gene resistance was not the solution to management of potato late blight as R-gene resistance was easily overcome. Breeders in Mexico thus concentrated on developing cultivars with rate-reducing resistance (59, 83, 88). One result of these interests was a series of breeding lines and clones developed by the Rockefeller Foundation and the Mexican national potato breeding program that relied on the introduction of field resistance from native *Solanum* species. This research program has produced several cultivars with remarkably high levels of field resistance (23, 24, 39, 41, 42). Cultivars such as Sangema (also known as Rosita) and Norteña show very high levels of field resistance, resulting in less than 25% or 8% foliar disease severity, respectively, without the use of a fungicide under Toluca valley conditions (41, 42). In a recent study, 12 of these Mexican cultivars were evaluated for durability of resistance to late blight based on experimental data recorded between 1960 and 1999 (39). At least two of these cultivars (Sangema and Tollocan) were grown on at least 5% of the potato acreage and over long periods of time without an apparent decay in field resistance, indicating that this field resistance is durable. Pedigrees of these 12 cultivars indicate that this field resistance was introgressed from *S. demissum* and possibly from local varieties such as 'Amarilla de Puebla' and 'Leona'. Thus, it appears that potatoes that show stable and durable resistance under tropical highland conditions are available (39).



A novel R-gene has recently been identified from *Solanum bulbocastanum*, another *Solanum* spp. native to Mexico (47, 89). The R-gene from *S. bulbocastanum* may be of a more general nature than R-gene resistance derived from *S. demissum*, as sporulation on *S. bulbocastanum* under Toluca valley conditions is limited to small, often necrotic lesions that sporulate at low frequency (47; N.J. Grünwald, unpublished data). Two allelic versions, RB and *Rpi-blb1*, of the R-gene have been mapped and cloned (58, 76, 89) and have provided renewed hope that monogenic resistance might be useful in managing potato late blight. Whether these novel R-genes will provide stable and durable resistance to late blight in a *S. tuberosum* background remains to be seen, given our previous experience with monogenic resistance to late blight. Certainly, the RB gene looks promising under Toluca valley conditions when exposed to a genetically diverse pathogen population.

## PHYTOPHTHORA POPULATION BIOLOGY

### Genotypic Variation and Marker Systems in *P. infestans*

As discussed above, oospores are formed ubiquitously and are expected to result in higher levels of genotypic variation in local populations of *P. infestans*. It appears that, unlike other populations of *P. infestans*, most isolates from central Mexico are diploid, with the exception of a few aneuploid strains. In an early study, Sansome (69) reported that Mexican isolates had a chromosome number approximately half that of isolates from North Wales. This was later confirmed by nuclear DNA content studies by Tooley & Therrien (86) and Gu et al. (43) using Feulgen and DAPI staining techniques, respectively.

A range of genotypic and phenotypic marker systems have been used to study diversity in populations of *P. infestans* from Mexico. The first studies relied on determination of virulence phenotype, mating type, and allozyme genotype. The population of *P. infestans* in central Mexico differs from other populations by the frequencies of specific virulence factors. More complex races, including isolates containing all of the specific virulence factors detectable (race 1.2.3.4.5.6.7.8.9.10.11), were found in isolates sampled from wild *Solanum* species and experimental potato fields (64). In most studies, mating-type ratios followed a 1:1 ratio and allozyme genotypes were in Hardy Weinberg equilibrium (36, 40), as expected for randomly mating populations. The moderately repetitive RFLP fingerprinting probe RG57 (33) allowed for the resolution of up to 27 distinct genetic loci, with every isolate obtained from Toluca having a unique banding pattern (36). More recently, amplified fragment length polymorphism (AFLP) was added to the repertoire of marker systems (21, 40). AFLP fingerprinting of 170 isolates collected in 1997 yielded 158 distinct loci of which 135 were polymorphic (21). High levels of genetic variation for a range of marker systems in *P. infestans* are clearly in evidence, whether isolates are derived from single lesions in a plot, a field, or the whole valley of Toluca (21, 33, 37, 40, 84, 85).

## Population Differentiation in *P. infestans*

There have been recent efforts to describe the population structure of *P. infestans* within the Toluca valley. Based on our knowledge of the natural history of the valley, it was apparent that this population could potentially be differentiated by up to three habitats based on host-plant and potato production systems (40). In the valley, intensive potato production with high inputs of pesticides and fertilizers is the norm. Low-input potato production is found on the foothills of the volcano Nevado de Toluca where potatoes are grown for subsistence. A third habitat for *P. infestans* is provided by several of the native *Solanum* species (68). No clear spatio-temporal discontinuity is present between cultivated potatoes in agroecosystems and wild *Solanum* hosts in natural ecosystems in the Toluca valley. The growing season for both cultivated and wild hosts is restricted to the summer season. Two endemic *Solanum* spp., *S. stoloniferum* and the hybrid species *S. × edinense*, occur in potato fields and other disturbed areas such as roadsides. At higher elevations in less disturbed ecosystems, wild *Solanum* species are found in forests dominated by *Abies* spp. and in extensively grazed grasslands.

Based on this knowledge of *P. infestans*, we tested the hypothesis that its populations in the Toluca valley are differentiated by the three habitats. All genetic marker systems, including allozyme, RFLP, and AFLP data, revealed significant differentiation by habitat (21, 40). The population structure seems to be fairly stable over time as it remained similarly differentiated between two large population samples obtained in 1988/89 and 1997/98 (40). Allozyme data indicated that heterozygosity and genotypic diversity in populations of *P. infestans* declined from commercial potato fields to wild *Solanum* spp. (40).

The picture was further refined in a follow-up study where AFLP data revealed an increase in genotypic diversity in the wild *Solanum* habitat (21). Subpopulations of *P. infestans* found in this habitat were among the most variable populations found in the valley. AFLP analysis revealed the presence of a large number of private alleles and highest heterozygosity in the native *Solanum* spp. subpopulation. On average, migration was less than 1 migrant per generation between populations of *P. infestans* from potatoes and of *S. demissum*, whereas no restrictions in gene flow were measured between populations of *P. infestans* from high- and low-input potato production systems. Thus, the conclusions drawn from these two studies differed slightly in interpretation of the direction of gene flow: Where the allozyme markers indicated a flow from high-input potatoes via low-input potatoes to native *Solanum* habitats (40), the opposite was the case when interpreting AFLP data (21).

The interpretations in the first study critically depended on the patterns observed for the selectable marker metalaxyl resistance. Metalaxyl-resistant strains were found on commercial potato crops and native *Solanum* species in similar frequencies, suggesting that strains migrate freely between potato crops and native *Solanum* species (40, 55). At the time, we assumed that any resistance to metalaxyl was the result of selection; as discussed above, we now believe that there exists a

baseline frequency of resistance as observed before the introduction of metalaxyl (55).

The reinterpretation of population structure based on metalaxyl resistance is also supported by observations on oospore formation. Differences in oospore production were observed between in vitro crosses of strains of *P. infestans* collected from potato and *S. demissum*. Isolates originating from the native host *S. demissum* produced significantly more oospores in crosses with strains collected from the same host species compared with crosses with isolates collected from cultivated potatoes (20).

The population structure of *P. infestans* in the Toluca valley is structured by several forces and has the appearance of a metapopulation structure on the native *Solanum* host species. This metapopulation provides a habitat for *P. infestans* consisting of small, random R-gene-driven islands that only phenotypes with compatible virulence genes can colonize. Furthermore, the patchiness of the native host population of *Solanum* reduces the effective population size of *P. infestans* in that habitat, thus resulting in genetic drift. At the same time, all three habitats are connected by gene flow, and the importance of individual forces remains to be established.

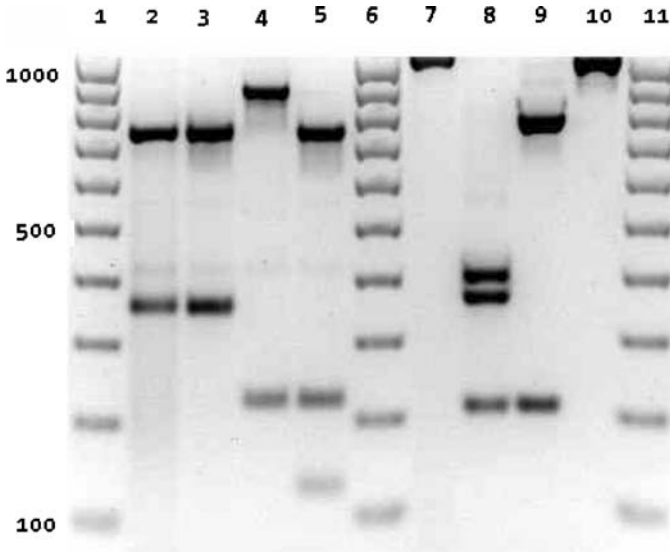
### Genotypic Diversity in *Phytophthora* Species Related to *P. infestans*

As outlined under speciation below, *P. infestans* has four close relatives coexisting in central Mexico. Two obvious questions emerging from the genotypic diversity work on *P. infestans* were whether the same markers show polymorphism in these relatives, namely *P. phaseoli*, *P. mirabilis*, and *P. ipomoeae*, and whether the populations are equally diverse. In a moderate size collection of isolates ( $n = 58$ ) of *P. mirabilis* sampled in Toluca and neighboring valleys, we detected no polymorphism at the *Pep* locus (fixation of the 96/96 genotype), 12 *Gpi* genotypes (including alleles 83, 90, 100, 108, and 111), 7 RFLP genotypes ( $n = 37$ ), and a total of 23 multilocus genotypes ( $n = 37$ ) based on mating type and *Gpi* (N.J. Grünwald, unpublished data). Similarly, a population ( $n = 14$ ) of *P. ipomoeae* was polymorphic for both the *Pep* (78/78, 78/96, 96/96) and *Gpi* (96/108, 108/108) loci, and we obtained 4 multilocus genotypes based on these two markers, whereas only one RFLP genotype was detected (22; N.J. Grünwald & W.G. Flier, unpublished data). Goodwin had previously established that the RG-57 RFLP probe is both evolutionarily conserved and highly polymorphic among close relatives of *P. infestans* including *P. mirabilis*, *P. colocasiae*, and *P. phaseoli* (33). AFLP fingerprinting revealed limited genetic variation in isolates of *P. ipomoeae*. Seven AFLP genotypes were found in a sample of 10 isolates (W.G. Flier, unpublished data). Thus, the molecular markers chosen for *P. infestans* based on their polymorphism are also polymorphic for *P. mirabilis* and *P. ipomoeae*, although less so. This is to be expected as the markers used for *P. infestans* were selected to be the most polymorphic for that organism, but not for the other two *Phytophthora* species.

## mtDNA Haplotype Diversity in *P. infestans* and Relatives

Currently, four mitochondrial haplotypes are described for *P. infestans* designated as Ia, Ib, IIa, and IIb (13, 38, 63). Isolates of the US-1 genotype show the Ib mtDNA haplotype (13, 38). The Ia mtDNA haplotype was the predominant haplotype found in the Toluca valley, although the IIa and IIb haplotypes were also observed in Mexico (31, 32). Because the Ib haplotype of the ancestral US-1 strain was not observed in Mexico, some studies hypothesized that the center of origin of *P. infestans* might be found in South America (62, 63). Recently, S.P. Fernández-Pavía and W.G. Flier (unpublished data) discovered the Ib haplotype in two Mexican isolates collected in 2003 in central Mexico. This discovery of the Ib haplotype in Mexico provides renewed evidence that the centers of diversity and origin of *P. infestans* coincide and are found in the central highlands of Mexico.

All three *P. infestans* relatives have one or more species-specific mtDNA haplotype(s) that are based on RFLPs (Figure 2). Although four haplotypes have been reported for *P. infestans*, only one mtDNA haplotype has been reported for *P. mirabilis* and *P. ipomoeae*, respectively (22).



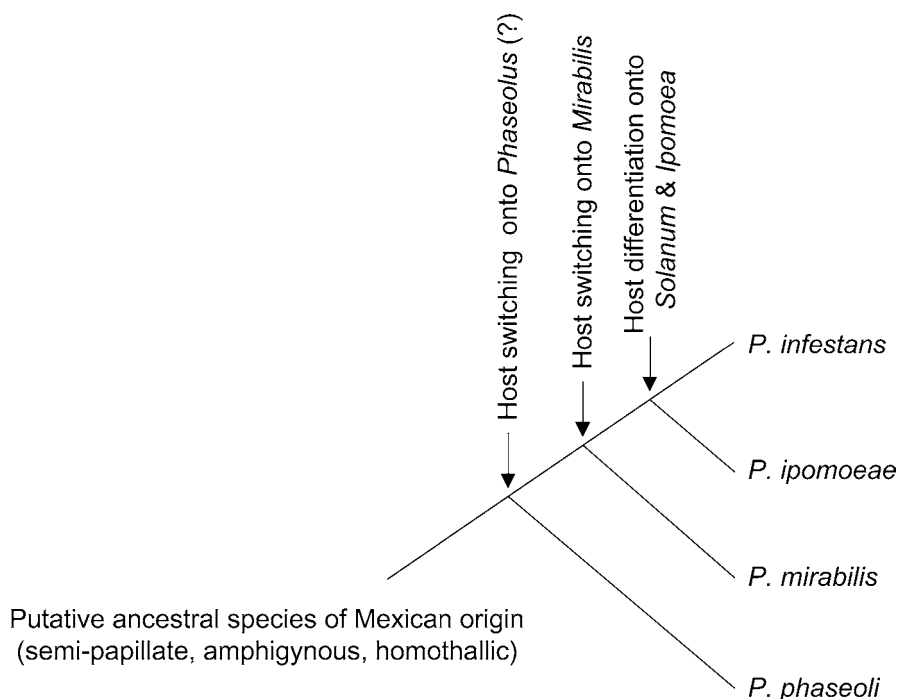
**Figure 2** Mitochondrial DNA haplotypes produced after PCR amplification and digestion of the P2 and P4 mtDNA region of *Phytophthora phaseoli*, *P. infestans*, *P. ipomoeae*, and *P. mirabilis* (W.G. Flier, unpublished data). Lanes 1, 6 and 11: DNA ladder (numbers indicate size in base pairs); lanes 2 to 5, restriction fragments of amplified P2 region of *P. phaseoli*, *P. infestans* (Ia haplotype), *P. ipomoeae* and *P. mirabilis*; lanes 7 to 10, restriction fragments of amplified P4 region of *P. phaseoli*, *P. infestans* (Ia haplotype), *P. ipomoeae*, and *P. mirabilis*.

## SPECIATION PATTERNS IN FOLIAR *PHYTOPHTHORA* PATHOGENS FROM MEXICO

The central highlands of Mexico, including the Toluca valley, are thought to be the center of origin and the primary center of diversity of three closely related *Phytophthora* pathogens (Figure 3). *P. infestans* and the sibling species *P. mirabilis* share a heterothallic mating system with apparently the same two mating types, A1 and A2, whereas *P. ipomoeae* has a homothallic mating system. A fourth species, *P. phaseoli*, may have originated from the central highlands of Mexico.

### Host Range of *Phytophthora* Pathogens of Mexican Origin

Lesions with the appearance of late blight occur not only on potato and wild *Solanum* species, but also on *Mirabilis jalapa* L., the endemic four o'clock that is classified into the family Nyctaginaceae. *M. jalapa* is a roadside weed commonly found in central Mexico. Isolates of a *Phytophthora* species from leaf lesions on



**Figure 3** Coevolutionary relationships of the foliar, Mexican *Phytophthora* species related to the potato late blight pathogen *P. infestans*. This diagram represents the current consensus picture based on extensive studies on molecular systematics, host specificity, and morphology (14, 22, 29, 34, 35, 51).

*M. jalapa* were first considered to be *P. infestans* (71) and subsequently renamed *P. mirabilis* (29). To date, the host range of *P. mirabilis* is restricted to *M. jalapa*. Like *P. infestans*, *P. mirabilis* is amphigynous and heterothallic.

In 1998, a new *Phytophthora* species, *P. ipomoeae* Flier and Grünwald, was discovered on the native morning glory *Ipomoeae longipedunculata* belonging in the family Convolvulaceae (22). Based on morphological characteristics, ITS sequences, and other genetic markers, this new species is most closely related to *P. phaseoli*, *P. mirabilis*, and *P. infestans*. *P. ipomoeae* is amphigynous and homothallic (22). *P. ipomoeae* causes leaf blight symptoms with water-soaked lesions that closely resemble those of *P. infestans* and *P. mirabilis*. Recently, *I. purpurea* was reported as another host for *P. ipomoeae* in the Toluca valley (5). So far, *P. ipomoeae* has only been found in the Toluca valley in the state of Mexico (22) and the neighboring state of Michoacán (S.P. Fernández-Pavía & N.J. Grünwald, unpublished data) and is restricted to the host genus *Ipomoeae*.

### Phylogeny of *P. infestans* and Related Species

Several lines of evidence point to the fact that *P. mirabilis*, *P. ipomoeae*, and *P. infestans* evolved from a common ancestor (Figure 3). Both *P. mirabilis* and *P. ipomoeae* are host specific and have been found only in central Mexico. Except for heterothallism in *P. infestans* and *P. mirabilis* and homothallism in *P. ipomoeae*, these species are difficult to distinguish morphologically. Allozyme, RFLP, and AFLP analyses have shown these species to be of unique and distinguishable genotypes (22, 35). The geographic distribution of both pathogen and host plant ranges show considerable overlap (35). These differences would be expected if sympatric evolution had occurred.

A recent phylogenetic analysis of the genus *Phytophthora* based on mitochondrial and nuclear DNA sequences (51) confirmed that *P. ipomoeae* is consistently placed within the Ic clade (14) with *P. infestans*, *P. phaseoli*, and *P. mirabilis*. *P. phaseoli* first diverged from the other members of this clade (51). Interestingly, whereas *P. infestans* and *P. mirabilis* are heterothallic, *P. ipomoeae* and *P. phaseoli* are homothallic. Based on an extensive phylogenetic analysis Kroon et al. (51) consider homothallism to be the ancestral condition in the genus *Phytophthora*, with several independent transitions to heterothallism. Kroon et al. (51) consider *P. ipomoeae* and *P. phaseoli* to be secondary homothallics.

How did these plant pathogens evolve from a common ancestral species? The three sibling species *P. infestans*, *P. mirabilis*, and *P. ipomoeae* are plant pathogens with nonoverlapping, distinct host ranges belonging to three different plant families. Native *Solanum* spp., *Mirabilis jalapa*, *Ipomoeae* spp., and *Phaseolus coccineus* all coexist in close proximity. The evolution of sibling pathogens may be driven by chance mutations or hybridization, as has been observed for other *Phytophthora* species (1, 11, 12), resulting in adaptive radiation (70). Host specialization and the trade-off in compatibility of pathogens to these hosts may define

the outcome of the evolutionary process (7, 8, 44). More experimental work is needed to test the hypothesis presented in Figure 3 that host switching followed by reproductive isolation indeed resulted in evolution and sympatric speciation in the genus *Phytophthora*. These efforts should include dating of phylogenies and identification of other extant relatives in Mexico including *P. phaseoli*.

## OUTLOOK

The most parsimonious explanation for the coexistence of *P. infestans*, *P. mirabilis*, *P. ipomoeae*, and possibly *P. phaseoli* is that they arose through sympatric speciation via adaptive radiation (see Figure 3). Certainly all four hosts, namely wild potato, four o'clock, morning glory, and scarlet runner beans, exist in close proximity. All four pathogen species have a host range that is specific to a plant family. Finally, rDNA, mitochondrial, and nuclear sequences as well as morphological characteristics all support the idea that these four *Phytophthora* species are monophyletic. It thus seems reasonable to advance the hypothesis that central Mexico is the center of evolution of *Phytophthora* clade 1 and that today's specialized *Phytophthora* pathogens are the result of sympatric evolution, driven by host switching and adaptive radiation.

Several interesting questions emerge from this hypothesis. Given the fact that many R-genes evolved in the *Solanum-P. infestans* arms race, can we expect that R-genes also coevolved in the interaction of the relatives of *P. infestans* with their respective hosts? How many potato R-genes are there? What is the phylogenetic history of these R-genes? Are hybrid progeny between these four *Phytophthora* species viable? Has hybridization played a role in speciation of these *Phytophthora* species? Are scarlet runner beans (*Phaseolus coccineus*) commonly found in the Toluca valley hosts to *P. phaseoli*? How many other endemic, related *Phytophthora* species are there? It appears that Toluca will remain a fertile ground for many future investigations.

## ACKNOWLEDGMENTS

N.J.G. thanks Bill Fry for his wonderful support and mentorship. W.G.F. is very grateful to Lod Turkensteen for his invaluable help. We thank Bill Fry, Steve Goodwin, Walt Mahaffee, Michael Milgroom, and Bob Linderman for critical reviews of the manuscript. Funding for the work conducted by N.J.G. and W.G.F. came from several sources including PICTIPAPA, the CEEM potato late blight project, the Dutch potato industry (HPA), DWK, USDA NRI, and USDA ARS CRIS 5358-12,220-002-00D. We appreciate the support by several Mexican Institutions (INIFAP, CIMMYT, and ICAMEX) and many individual collaborators in Mexico: Hector Lozoya-Saldaña, Oswaldo Rubio-Covarrubias, Mateo Cadena-Hinojosa, Manuel Villarreal-Gonzalez, Francisco Flores-Gutiérrez, José Gomez, and Antonio Rivera-Peña.

The Annual Review of Phytopathology is online at  
<http://phyto.annualreviews.org>

## LITERATURE CITED

1. Adler NE, Erselius LJ, Chacon MG, Flier WG, Ordonez ME, et al. 2004. Genetic diversity of *Phytophthora infestans* sensu lato in Ecuador provides new insight into the origin of this important plant pathogen. *Phytopathology* 94:154–62
2. Al-Kherb SM, Fininsa C, Shattock RC, Shaw DS. 1995. The inheritance of virulence of *Phytophthora infestans* to potato. *Plant Pathol.* 44:552–62
3. Andersson B, Sandström M, Strömberg A. 1998. Indications of soil borne inoculum of *Phytophthora infestans*. *Potato Res.* 41:305–10
4. Andrade-Piedra J. 2005. *Potato late blight: modification, validation and qualification of the LATEBLIGHT model*. PhD thesis. Cornell Univ., Ithaca, NY. 107 pp.
5. Badillo-Ponce G, Fernandez-Pavia SP, Grünwald NJ, Garay-Serrano E, Rodriguez-Alvarado G, Lozoya-Saldana H. 2004. First report of blight of *Ipomoea purpurea* caused by *Phytophthora ipomoeae*. *Plant Dis.* 88:1283
6. Beaumont A. 1947. The dependence on the weather of the dates of outbreak of potato blight epidemics. *Trans. Br. Mycol. Soc.* 31: 45–53
7. Berg LM, Lascoux M. 2000. Neutral genetic differentiation in an island model with cyclical parthenogenesis. *J. Evol. Biol.* 3:488–94
8. Berlocher SH. 1998. Can sympatric speciation via host or habitat shift be proven from phylogenetic and biogeographic evidence? In *Endless Forms, Species and Speciation*, ed. DJ Howard, ST Berlocher, pp. 99–113. New York: Oxford Univ. Press
9. Black W, Gallegly ME. 1957. Screening of *Solanum* species for resistance to physiologic races of *Phytophthora infestans*. *Am. Potato J.* 34:273–81
10. Bourke PMA. 1955. The forecasting from weather data of potato blight and other plant diseases and pests. *World Meteorol. Organ. Tech. Note* 10
11. Brasier CM. 2001. Rapid evolution of introduced plant pathogens via interspecific hybridization. *BioScience* 51:123–33
12. Brasier CM, Cooke DEL, Duncan JM. 1999. Origin of a new *Phytophthora* pathogen through interspecific hybridization. *Proc. Natl. Acad. Sci. USA* 96:5878–83
13. Carter DA, Archer SA, Buck KW, Shaw DS, Shattock RC. 1990. Restriction fragment length polymorphisms of mitochondrial DNA of *Phytophthora infestans*. *Mycol. Res.* 94:1123–28
14. Cooke DEL, Drenth A, Duncan JM, Wagels G, Brasier CM. 2000. A molecular phylogeny of *Phytophthora* and related oomycetes. *Fungal Genet. Biol.* 30:17–32
15. Drenth A, Janssen EM, Govers F. 1995. Formation and survival of oospores of *Phytophthora infestans* under natural conditions. *Plant Pathol.* 44:86–94
16. Duvauchelle S. 1991. Lutte contre le mildiou de la pomme de terre en France: modèles de prévision pour les avertissements agricoles et stratégie d'utilisation des spécialités contenant des matières actives systématiques face à la résistance. *EPPO Bull.* 21:49–55
17. Elguezabal JF. 1993. *Influencia del genotipo de papa en la producción de oosporas de Phytophthora infestans (Mont.) de Bary*. PhD thesis. Coll. Postgrad., Montecillo, Mex. 67 pp.
18. Fernández-Pavía SP, Grünwald NJ, Díaz-Valasis M, Cadena Hinojosa M, Fry WE. 2004. Soil-borne oospores of *Phytophthora infestans* in central Mexico survive winter

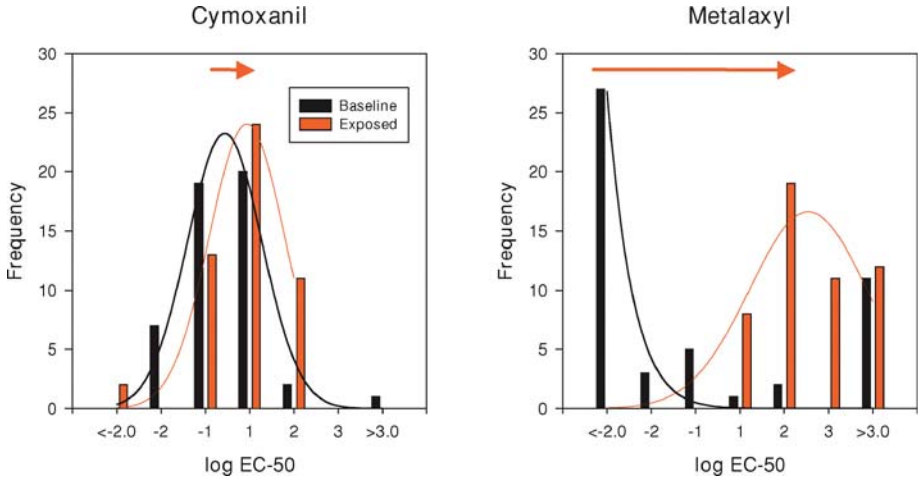


- fallow and infect potato plants in the field. *Plant Dis.* 88:29–33
19. Fernández-Pavía SP, Grünwald NJ, Fry WE. 2002. Formation of *Phytophthora infestans* oospores in nature on tubers in central Mexico. *Plant Dis.* 86:73
  20. Flier WG, Grünwald NJ, Fry WE, Turkensteen LJ. 2001. Formation, production and viability of oospores of *Phytophthora infestans* isolates from potato and *Solanum demissum* in the Toluca valley, central Mexico. *Mycol. Res.* 105:998–1006
  21. Flier WG, Grünwald NJ, Kroon LPNM, Sturbaum AK, van den Bosch GBM, et al. 2003. The population structure of *Phytophthora infestans* from the Toluca valley in central Mexico suggests genetic differentiation between populations from cultivated potato and wild *Solanum* species. *Phytopathology* 93:382–90
  22. Flier WG, Grünwald NJ, Kroon LPNM, van den Bosch TBM, Garay-Serrano E, et al. 2002. *Phytophthora ipomoeae*, a new homothallic species causing late blight on *Ipomoeae longipedunculata* in the Toluca valley of central Mexico. *Mycol. Res.* 106:848–56
  23. Flores-Gutiérrez FX. 1997. Resistencia de campo al tizón tardío *Phytophthora infestans* (Mont.) de Bary en variedades y clones de papa Mexicanos. *Agric. Téc. Méx.* 23:15–25
  24. Flores-Gutiérrez FX, Cadena-Hinojosa MA. 1996. Evaluation of horizontal resistance and effects of R-genes in ten Mexican cultivars against potato late blight (*Phytophthora infestans*) under natural conditions in the central plateau of Mexico. *Rev. Mex. Fitopatol.* 102:97–102
  25. Forsund E. 1983. Late blight forecasting in Norway 1957–1980. *EPPO Bull.* 13:255–58
  26. Fry WE, Goodwin SB, Dyer AT, Matuszak JM, Drenth A, et al. 1993. Historical and recent migrations of *Phytophthora infestans*: chronology, pathways, and implications. *Plant Dis.* 77:653–61
  27. Fry WE, Spielman LJ. 1991. Population biology. In *Phytophthora infestans, The Cause of Late Blight of Potato*, ed. DS Ingram, PH Williams, pp. 171–92. New York: Academic
  28. Galindo J, Gallegly ME. 1960. The nature of sexuality in *Phytophthora infestans*. *Phytopathology* 50:123–28
  29. Galindo J, Hohl HR. 1985. *Phytophthora mirabilis*, a new species of *Phytophthora*. *Sydowia* 38:87–96
  30. Gallegly ME, Galindo J. 1958. Mating types and oospores of *Phytophthora infestans* in nature in Mexico. *Phytopathology* 48:274–77
  31. Gavino PD. 1999. *Mitochondrial DNA evolution and its utility for population genetic studies of Phytophthora infestans*. PhD thesis. Cornell Univ., Ithaca, NY
  32. Goodwin SB. 1991. DNA polymorphisms in *Phytophthora infestans*: the Cornell experience. In *Phytophthora*, ed. JA Lucas, RC Shattock, DS Shaw, LR Cooke, pp. 256–71. Cambridge: Cambridge Univ. Press
  33. Goodwin SB, Drenth A, Fry WE. 1992. Cloning and genetic analyses of two highly polymorphic, moderately repetitive nuclear DNAs from *Phytophthora infestans*. *Curr. Genet.* 22:107–15
  34. Goodwin SB, Fry WE. 1994. Genetic analysis of interspecific hybrids between *Phytophthora infestans* and *Phytophthora mirabilis*. *Exp. Mycol.* 18:20–32
  35. Goodwin SB, Legard DE, Smart CD, Levy M, Fry WE. 1999. Gene flow analysis of molecular markers confirms that *Phytophthora mirabilis* and *P. infestans* are separate species. *Mycologia* 91:796–810
  36. Goodwin SB, Spielman LJ, Matuszak JM, Bergeron SN, Fry WE. 1992. Clonal diversity and genetic differentiation of *Phytophthora infestans* populations in northern and central Mexico. *Phytopathology* 82:955–61
  37. Graham KH, Niederhauser JS, Romero S. 1959. Observations on races of *Phytophthora infestans* in Mexico during 1956–1957. *Am. Potato J.* 36:196–203

38. Griffith GW, Shaw DS. 1998. Polymorphisms in *Phytophthora infestans*: four mitochondrial haplotypes are detected after PCR amplification of DNA from pure cultures or from host lesions. *Appl. Env. Microbiol.* 64:4007–14
39. Grünwald NJ, Cadena Hinojosa M, Rubio Covarrubias OA, Rivera Peña A, Niederhauser JS, Fry WE. 2002. Potato cultivars from the Mexican national program: sources and durability of resistance against late blight. *Phytopathology* 92:688–93
40. Grünwald NJ, Flier WG, Sturbaum AK, Garay-Serrano E, van den Bosch TBM, et al. 2001. Population structure of *Phytophthora infestans* in the Toluca valley region of Central Mexico. *Phytopathology* 91:882–90
41. Grünwald NJ, Romero Montes G, Lozoya Saldaña H, Rubio Covarrubias OA, Fry WE. 2002. Potato late blight management in the Toluca valley: field validation of Sim-Cast modified for cultivars with high field resistance. *Plant Dis.* 86:1163–68
42. Grünwald NJ, Rubio-Covarrubias OA, Fry WE. 2000. Potato late-blight management in the Toluca valley: forecasts and resistant cultivars. *Plant Dis.* 84:410–16
43. Gu WK, Spielman LJ, Matuszak JM, Aist JR, Bayles CJ, Fry WE. 1993. Measurement of nuclear DNA contents of Mexican isolates of *Phytophthora infestans*. *Mycol. Res.* 97:857–60
44. Gudelj I, Fitt BDL, van den Bosch F. 2004. Evolution of sibling fungal plant pathogens in relation to host specialization. *Phytopathology* 94:789–95
45. Hanson K, Shattock RC. 1998. Formation of oospores of *Phytophthora infestans* in cultivars of potato with different levels of race-nonspecific resistance. *Plant Pathol.* 47:123–29
46. Hawkes JG. 1990. *The Potato: Evolution, Biodiversity and Genetic Resources*. Washington, DC: Smithsonian Inst. Press. 259 pp.
47. Helgeson JP, Pohlman JD, Austin S, Haberlach GT, Wielgus SM, et al. 1998. Somatic hybrids between *Solanum bulbocastanum* and potato: a new source of resistance to late blight. *Theor. Appl. Genet.* 96:738–42
48. Hijmans RJ, Spooner DM. 2001. Geographic distribution of wild potato species. *Am. J. Bot.* 88:2101–12
49. Judelson HS. 1997. Expression and inheritance of sexual preference and selfing potential in *Phytophthora infestans*. *Fungal Genet. Biol.* 21:188–97
50. Krause RA, Massie LB, Hyre RA. 1975. BLITECAST: a computerized forecast of potato late blight. *Plant Dis. Report.* 59:95–98
51. Kroon LPNM, Bakker FT, van den Bosch GBM, Bonants PJM, Flier WG. 2004. Phylogenetic analysis of *Phytophthora* species based on mitochondrial and nuclear DNA sequences. *Fungal Genet. Biol.* 41:766–82
52. Lapwood DH. 1962. *Observations on Potato Blight in Mexico in 1962, Mexico*. Toluca, Mex.: Rockefeller Found.
53. Lozoya-Saldaña H, Hernández A, Flores R, Bamberg J. 1997. Late blight on wild *Solanum* species in the Toluca valley in 1996. *Am. Potato J.* 74:445
54. Malcolmson JF, Black W. 1966. New R genes in *Solanum demissum* Lindl. and their complementary races of *Phytophthora infestans* (Mont.) de Bary. *Euphytica* 15:199–203
55. Matuszak JM, Fernandez Elquezabal J, Villarreal Gonzalez M, Fry WE. 1994. Sensitivity of *Phytophthora infestans* populations to metalaxyl in Mexico: distribution and dynamics. *Plant Dis.* 78:911–16
56. Mills WR, Niederhauser JS. 1953. Observations of races of *Phytophthora infestans* in Mexico. *Phytopathology* 43:454–55
57. Mosa AA, Kobayashi K, Ogoshi A, Kato M, Sato N. 1991. Formation of oospores by *Phytophthora infestans* in inoculated potato tissues. *Ann. Phytopathol. Soc. Jpn.* 57:334–38
58. Naess SK, Bradeen JM, Wielgus SM, Haberlach GT, McGrath JM, Helgeson JP. 2000. Resistance to late blight in *Solanum*

- bulbocastanum* is mapped to chromosome 8. *Theor. Appl. Genet.* 101:697–704
59. Niederhauser JS. 1961. Genetic studies of *Phytophthora infestans* and *Solanum* species in relation to late-blight resistance in potato. *Rec. Adv. Bot.* 1:491–97
  60. Niederhauser JS. 1991. *Phytophthora infestans*: the Mexican connection. In *Phytophthora*, ed. JA Lucas, RC Shattock, DS Shaw, LR Cooke, pp. 25–45. Cambridge: Cambridge Univ. Press
  61. Niederhauser JS, Cervantes J, Servin L. 1954. Late blight in Mexico and its implications. *Phytopathology* 44:406–8
  62. Ristaino JB. 2002. Tracking historic migrations of the Irish potato famine pathogen, *Phytophthora infestans*. *Microbes Infect.* 4:1369–77
  63. Ristaino JB, Groves CT, Parra GR. 2001. PCR amplification of the Irish potato famine pathogen from historic specimens. *Nature* 411:695–97
  64. Rivera-Peña A. 1988. *Interactions between wild tuber-bearing Solanum species and Phytophthora infestans (Mont.) de Bary in a natural habitat and implications of the results for potato breeding*. PhD thesis. Swed. Univ. Agric. Sci., Uppsala, Sweden. 96 pp.
  65. Rivera-Peña A. 1990. Wild tuber-bearing species of *Solanum* and incidence of *Phytophthora infestans* (Mont.) de Bary on the Western slopes of the volcano Nevado de Toluca. 2. Distribution of *Phytophthora infestans*. *Potato Res.* 33:341–47
  66. Rivera-Peña A. 1990. Wild tuber-bearing species of *Solanum* and incidence of *Phytophthora infestans* (Mont.) de Bary on the western slopes of the volcano Nevado de Toluca. 4. Plant development in relation to late blight infection. *Potato Res.* 33:469–78
  67. Rivera-Peña A. 1990. Wild tuber-bearing species of *Solanum* and incidence of *Phytophthora infestans* (Mont.) de Bary on the Western slopes of the volcano Nevado de Toluca. 5. Type of resistance to *P. infestans*. *Potato Res.* 33:479–86
  68. Rivera-Peña A, Molina-Galan J. 1989. Wild tuber-bearing species of *Solanum* and incidence of *Phytophthora infestans* (Mont.) de Bary on the Western slopes of the volcano Nevado de Toluca. 1. *Solanum* species. *Potato Res.* 32:181–95
  69. Sansome E. 1977. Polyploidy and induced gametangial formation in isolates of *Phytophthora infestans*. *J. Gen. Microbiol.* 99:311–16
  70. Seehausen O. 2004. Hybridization and adaptive radiation. *Trends Ecol. Evol.* 19: 198–207
  71. Servin L. 1958. Especie de *Phytophthora infestans* atacando a *Mirabilis jalapa*. *Mem. Congr. Nac. Entomol. Fitopatol.:* 491–500
  72. Shattock RC, Tooley PW, Fry WE. 1985. Determination of recombination, segregation and selfing in single-oospore cultures of *Phytophthora infestans* by isozyme analysis. *Phytopathology* 75:1309–10
  73. Shattock RC, Tooley PW, Fry WE. 1986. Genetics of *Phytophthora infestans*: characterization of single-oospore cultures from AI isolates induced to self by intraspecific stimulation. *Phytopathology* 76:407–10
  74. Smith LP. 1956. Potato blight forecasting by 90 percent humidity criteria. *Plant Pathol.* 5:83–87
  75. Smoot JJ, Gough FJ, Lamey HA, Eichenmuller JJ, Gallegly ME. 1958. Production and germination of oospores of *Phytophthora infestans*. *Phytopathology* 48:165–71
  76. Song JQ, Bradeen JM, Naess SK, Raasch JA, Wielgus SM, et al. 2003. Gene RB cloned from *Solanum bulbocastanum* confers broad spectrum resistance to potato late blight. *Proc. Natl. Acad. Sci. USA* 100:9128–33
  77. Spielman LJ, McMaster BJ, Fry WE. 1989. Dominance and recessiveness at loci for virulence against potato and tomato in *Phytophthora infestans*. *Theor. Appl. Genet.* 77:832–38
  78. Spielman LJ, Sweigard JA, Shattock RC, Fry WE. 1990. The genetics of

- Phytophthora infestans*: segregation of allozyme markers in F2 and backcross progeny and the inheritance of virulence against potato resistance genes R2 and R4 in F1 progeny. *Exp. Mycol.* 14:57–69
79. Spooner DM, Bamberg J, Hjerting JP, Gómez J. 1991. Mexico, 1988 potato germplasm collecting expedition and utility of the Mexican potato species. *Am. Potato J.* 68:29–43
80. Spooner DM, Hijmans RJ. 2001. Potato systematics and germplasm collecting, 1989–2000. *Am. J. Potato Res.* 78:237–68
81. Spooner DM, Rivera Peña A, Van den Berg RG, Schüller K. 2000. Potato germplasm collecting expedition to Mexico in 1997: Taxonomy and new germplasm resources. *Am. J. Potato Res.* 77:261–70
82. Thompson JN, Burdon JJ. 1992. Gene-for-gene coevolution between plants and parasites. *Nature* 360:121–25
83. Thurston HD. 1971. Relationship of general resistance: late blight of potato. *Phytopathology* 61:620–26
84. Tooley PW, Fry WE, Villareal-Gonzalez MJ. 1985. Isozyme characterization of sexual and asexual *Phytophthora infestans* populations. *J. Hered.* 76:431–35
85. Tooley PW, Sweigard JA, Fry WE. 1986. Fitness and virulence of *Phytophthora infestans* isolates from sexual and asexual populations. *Phytopathology* 76:1209–12
86. Tooley PW, Therrien CD. 1987. Cytophotometric determination of the nuclear DNA content of 23 Mexican and 18 non Mexican isolates of *Phytophthora infestans*. *Exp. Mycol.* 11:19–26
87. Turkensteen LJ, Flier WG, Wannigen R, Mulder A. 2000. Production, survival and infectivity of oospores of *Phytophthora infestans*. *Plant Pathol.* 49:688–96
88. van der Plank JE. 1971. Stability of resistance to *Phytophthora infestans* in cultivars without R genes. *Potato Res.* 14:263–70
89. van der Vossen E, Sikkema A, Hekkert BtL, Gros J, Stevens P, et al. 2003. An ancient R gene from the wild potato species *Solanum bulbocastanum* confers broad-spectrum resistance to *Phytophthora infestans* in cultivated potato and tomato. *Plant J.* 36:867–82



**Figure 1** Distribution of the logarithm of EC-50 values before and after exposure of the population of *Phytophthora infestans* to cymoxanil or metalaxyl (N.J. Grünwald & W.E. Fry, unpublished data). Classes of sensitivity were based on the logarithm of EC-50 values and defined as follows:  $\leq -2.0$ ,  $> -2.0$  to  $\leq -1.0$ ,  $> -1.0$  to  $\leq 0.0$ ,  $> 0.0$  to  $\leq 1.0$ ,  $> 1.0$  to  $\leq 2.0$  and  $> 2.0$   $\mu\text{g ml}^{-1}$ . The two-sided probability values given were determined using a Monte Carlo approximation to the Fisher's exact test for  $s \times r$  tables contrasting the frequency distributions for baseline and exposed populations for each fungicide. The arrows indicate the direction (and approximate magnitude) of a statistically significant shift in median from distributions before and after exposure of the population to a fungicide.

## CONTENTS

FRONTISPIECE, <i>Robert K. Webster</i>	xii
BEING AT THE RIGHT PLACE, AT THE RIGHT TIME, FOR THE RIGHT REASONS—PLANT PATHOLOGY, <i>Robert K. Webster</i>	1
FRONTISPIECE, <i>Kenneth Frank Baker</i>	
KENNETH FRANK BAKER—PIONEER LEADER IN PLANT PATHOLOGY, <i>R. James Cook</i>	25
REPLICATION OF ALFAMO- AND ILARVIRUSES: ROLE OF THE COAT PROTEIN, <i>John F. Bol</i>	39
RESISTANCE OF COTTON TOWARDS <i>XANTHOMONAS CAMPESTRIS</i> pv. <i>MALVACEARUM</i> , <i>E. Delannoy, B.R. Lyon, P. Marmey, A. Jalloul, J.F. Daniel, J.L. Montillet, M. Essenberg, and M. Nicole</i>	63
PLANT DISEASE: A THREAT TO GLOBAL FOOD SECURITY, <i>Richard N. Strange and Peter R. Scott</i>	83
VIROIDS AND VIROID-HOST INTERACTIONS, <i>Ricardo Flores, Carmen Hernández, A. Emilio Martínez de Alba, José-Antonio Daròs, and Francesco Di Serio</i>	117
PRINCIPLES OF PLANT HEALTH MANAGEMENT FOR ORNAMENTAL PLANTS, <i>Margery L. Daughtrey and D. Michael Benson</i>	141
THE BIOLOGY OF <i>PHYTOPHTHORA INFESTANS</i> AT ITS CENTER OF ORIGIN, <i>Niklaus J. Grünwald and Wilbert G. Flier</i>	171
PLANT PATHOLOGY AND RNAi: A BRIEF HISTORY, <i>John A. Lindbo and William G. Dougherty</i>	191
CONTRASTING MECHANISMS OF DEFENSE AGAINST BIOTROPHIC AND NECROTROPHIC PATHOGENS, <i>Jane Glazebrook</i>	205
LIPIDS, LIPASES, AND LIPID-MODIFYING ENZYMES IN PLANT DISEASE RESISTANCE, <i>Jyoti Shah</i>	229
PATHOGEN TESTING AND CERTIFICATION OF <i>VITIS</i> AND <i>PRUNUS</i> SPECIES, <i>Adib Rowhani, Jerry K. Uyemoto, Deborah A. Golino, and Giovanni P. Martelli</i>	261
MECHANISMS OF FUNGAL SPECIATION, <i>Linda M. Kohn</i>	279

<i>PHYTOPHTHORA RAMORUM</i> : INTEGRATIVE RESEARCH AND MANAGEMENT OF AN EMERGING PATHOGEN IN CALIFORNIA AND OREGON FORESTS, <i>David M. Rizzo, Matteo Garbelotto, and Everett M. Hansen</i>	309
COMMERCIALIZATION AND IMPLEMENTATION OF BIOCONTROL, <i>D.R. Fravel</i>	337
EXPLOITING CHINKS IN THE PLANT'S ARMOR: EVOLUTION AND EMERGENCE OF GEMINIVIRUSES, <i>Maria R. Rojas, Charles Hagen, William J. Lucas, and Robert L. Gilbertson</i>	361
MOLECULAR INTERACTIONS BETWEEN TOMATO AND THE LEAF MOLD PATHOGEN <i>CLADOSPORIUM FULVUM</i> , <i>Susana Rivas and Colwyn M. Thomas</i>	395
REGULATION OF SECONDARY METABOLISM IN FILAMENTOUS FUNGI, <i>Jae-Hyuk Yu and Nancy Keller</i>	437
TOSPOVIRUS-THRIPS INTERACTIONS, <i>Anna E. Whitfield, Diane E. Ullman, and Thomas L. German</i>	459
HEMIPTERANS AS PLANT PATHOGENS, <i>Isgouhi Kaloshian and Linda L. Walling</i>	491
RNA SILENCING IN PRODUCTIVE VIRUS INFECTIONS, <i>Robin MacDiarmid</i>	523
SIGNAL CROSSTALK AND INDUCED RESISTANCE: STRADDLING THE LINE BETWEEN COST AND BENEFIT, <i>Richard M. Bostock</i>	545
GENETICS OF PLANT VIRUS RESISTANCE, <i>Byoung-Cheorl Kang, Inhwa Yeam, and Molly M. Jahn</i>	581
BIOLOGY OF PLANT RHABDOVIRUSES, <i>Andrew O. Jackson, Ralf G. Dietzgen, Michael M. Goodin, Jennifer N. Bragg, and Min Deng</i>	623
INDEX	
Subject Index	661
ERRATA	
An online log of corrections to <i>Annual Review of Phytopathology</i> chapters may be found at <a href="http://phyto.annualreviews.org/">http://phyto.annualreviews.org/</a>	